

CR 30-Xm

The versatile CR 30-Xm offers the high quality needed for digital mammography, as well as for a broad range of applications, from an affordable table-top CR digitizer.

- Complete solution for digital mammography and all general radiography applications including applications that require detection of very small details such as extremities
- No compromises in image quality
- Fits in small spaces and is suited for mobile applications
- Easy to install and maintain
- Convenient and fast workflow
- Embedded memory links image and patient details

'Complete solution' for digital mammography and all general radiography applications including applications that require detection of very small detail such as extremities

The CR 30-Xm is a versatile computed radiography (CR) digitizer that can handle digital mammography, as well as all general radiography, orthopaedic, chiropractic, Full Leg/Full Spine and dental applications. The total cost of ownership remains low, making it an affordable way to move from analog to digital. It offers an ideal solution for any hospital or private practice that wants a single, digital solution for carrying out the maximum number of types of studies.

Fits in small spaces and is suited for mobile applications

With its table-top size, the CR 30-Xm digitizer can be placed easily at any location. It works with dedicated cassettes and is designed with ease of use in mind, for optimal handling, comfort and maintenance. When combined with a universal X-ray shield, the CR 30-Xm can be used inside the X-ray room. It also integrates into vans, trucks and other mobile facilities, for mobile applications such as mobile breast screening initiatives.



CR 30-XM DIGITIZER



Easy to install and maintain

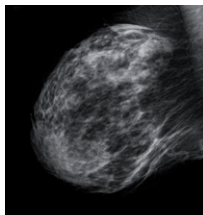
Installing the CR 30-Xm can be done in a single day. Special LED technology in the erasure unit means no additional electricity is required, just standard electrical outlets. Consequently, set up costs are lower and installation simpler. And with the modular, component-based design, maintenance is faster, easier and more cost-effective, as well.

Embedded memory links image and patient details

The CR 30-Xm uses dedicated cassettes with an embedded memory that stores the data entered during identification. The built-in antenna card uses no-touch radiofrequency tagging to identify the data. ID data and images are linked from the beginning, and throughout the entire electronic processing system.

Convenient and fast workflow

The CR 30-Xm works in conjunction with NX, Agfa's image identification and quality control tool, for a highly efficient and optimized radiology workflow. It is fully DICOM compliant, making integrating the digitizer with other solution elements quick and easy. The heavy-duty CR 30-Xm reads imaging plates at a rate of 60 full size (35 x 43 cm) plates per hour.





General radiography, Extremities, FLFS: imaging plates and cassettes



Mammography: imaging plates and cassettes

CASSETTE SIZES

■ CR MD4.0T General

| Cassette Sizes | Spatial Resolution | Pixel Matrix |
|-----------------------|-----------------------|--------------|
| 35 x 43 cm (14 x 17") | 100 µm (10 pixels/mm) | 3480 x 4248 |
| 35 x 35 cm (14 x 14") | 100 µm (10 pixels/mm) | 3480 x 3480 |
| 24 x 30 cm | 100 µm (10 pixels/mm) | 2328 x 2928 |
| 18 x 24 cm | 100 µm (10 pixels/mm) | 1728 x 2328 |
| 15 x 30 cm | 100 µm (10 pixels/mm) | 1440 x 2928 |

■ CR MD4.0T FLFS

| | | |
|-----------------------|-----------------------|-------------|
| 35 x 43 cm (14 x 17") | 100 µm (10 pixels/mm) | 3480 x 4406 |
|-----------------------|-----------------------|-------------|

■ CR MM3.0T Extremities

| | | |
|------------|----------------------|-------------|
| 24 x 30 cm | 50 µm (20 pixels/mm) | 4656 x 5856 |
| 18 x 24 cm | 50 µm (20 pixels/mm) | 3456 x 4656 |

■ CR MM3.0T Mammo

| | | |
|------------|----------------------|-------------|
| 24 x 30 cm | 50 µm (20 pixels/mm) | 4710 x 5844 |
| 18 x 24 cm | 50 µm (20 pixels/mm) | 3510 x 4644 |

SAFETY

Region

Regulation

X-ray

Laser

■ Europe

EN 60601-1: 1990 +
A1: 1993 + A2: 1995
EN 60601-1-2: 2007

Regulation: 1987

EN 60825 - 1:2001

Technical specifications

GENERAL

Digitizer type

- **Model number:** 5179/100
- **Single cassette feed**
- **Throughput:**
 - 35 x 43 cm (14 x 17") = approx. 60 plates/hour
 - 35 x 35 cm (14 x 14") = approx. 60 plates/hour
 - 24 x 30 cm (9.5 x 12") = approx. 71 plates/hour
 - 18 x 24 cm (7 x 9.5") = approx. 76 plates/hour
 - 15 x 30 cm (6 x 12") = approx. 82 plates/hour
 - 24 x 30 cm extremities = approx. 32 plates/hour
 - 18 x 24 cm extremities = approx. 38 plates/hour
 - 24 x 30 cm mammo = approx. 32 plates/hour
 - 18 x 24 cm mammo = approx. 38 plates/hour

Display

- **LED Status Indicator**
- **Status and error messages on external PC monitor**

Greyscale resolution

- **Data acquisition:** 20 bits/pixel
- **Output to processor:** 16 bits/pixel square root compressed

Dimensions and weight

- **W x D x H:** 693 x 701 x 546 mm (27.2 x 27.6 x 21.5")
- **Depth including input tray:** 769 mm (30.3")
- **Weight:** approx. 72 kg (158 lbs)

Power

- **220 - 240 V, 1.0 A/50-60 Hz**
- **100 - 120 V, 2.0 A/50-60 Hz**

Minimum requirements

- **CR MD4.0T GENERAL CASSETTE**
- **CR MD4.0T FULL LEG/FULL SPINE CASSETTE**
- **CR MD4.0 GENERAL PLATE**
- **CR MM3.0T EXTREMITIES CASSETTE & PLATE**
- **CR MM3.0T MAMMO CASSETTE & PLATE**
- **NX**

Environmental conditions

- **Temperature:** 15 - 30° C (59 - 86° F)
- **Humidity:** 15 - 80% Rh
- **Magnetic fields:** max. 3.8 µT in conformance with EN 61000-4-8: level 2
- **Rate of change of temperature:** 0.5° C/minute (0.9° F)

Environmental effects

- **Noise level:** max. 65 dB (A)
- **Heat dissipation:** standby 80 W, max. 200 W

Transport details

- **Temperature:** -25 to +55° C (-4 to 131° F), -25° C for max. 72 hours, +55° C for max. 96 hours
- **Humidity:** 5 - 95% Rh

SAFETY

Approvals

- **CE, UL**

For more information on Agfa, please visit our website on www.agfa.com ■

Agfa and the Agfa rhombus are trademarks of Agfa-Gevaert NV, Belgium, or its affiliates. All rights reserved. All information contained herein is intended for guidance purposes only, and characteristics of the products and services described in this publication can be changed at any time without notice. Products and services may not be available for your local area. Please contact your local sales representative for availability information. Agfa-Gevaert NV diligently strives to provide as accurate information as possible, but shall not be responsible for any typographical error.

* CR 30-Xm is not available in the US and Canada.

© 2018 Agfa NV
All rights reserved
Published by Agfa NV
Septestraat 27 - 2640 Mortsel
Belgium

5TNVD GB 00201801